

**YARINGA SLIPPING AND SLIPWAY SERVICES**



# How long since you slipped your boat?

Members due for a slip should ask Sheryl or Miranda in the office for a quote to slip, pressure wash, antifoul & replace anodes if necessary. Or we'll slip and pressure wash then you do the rest. First 7 days on hard are free.

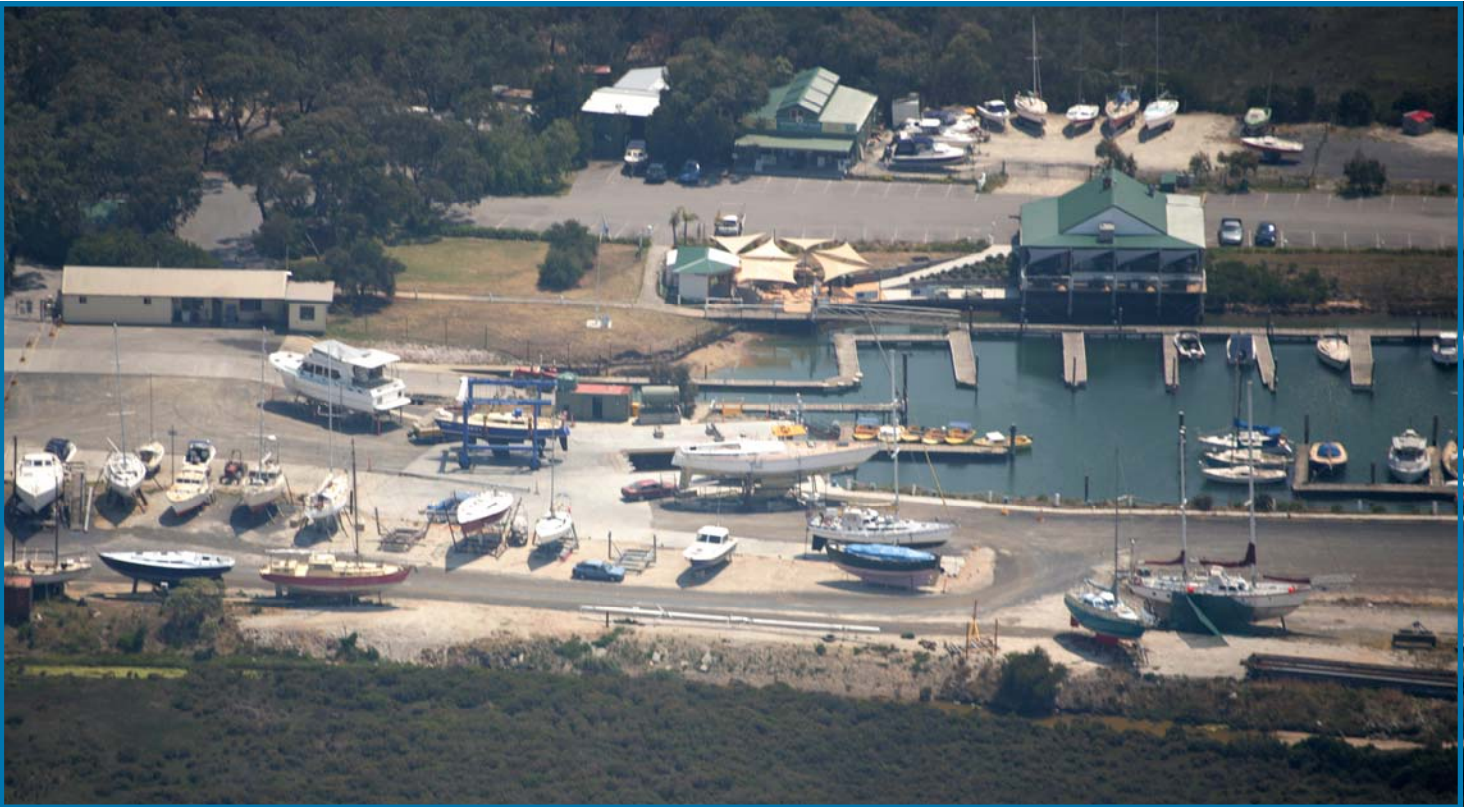


## Slip at Yaringa

Whether you keep your boat at another marina or yacht club, at a jetty or on a swing mooring you are always welcome to slip at Yaringa Marina. Spacious, efficient, relaxed, friendly and peaceful you should give it a try. You'll be pleased with the very reasonable prices and we know you'll be back : customers returning each year testify to that.

You can do your own repairs & maintenance or use our on-site experts. Yaringa has the largest number of marine contractors & services on a single site south of Queensland's Gold Coast.





## Yaringa's Spacious Slipway the envy of many.

High on the wish-list of most marinas and yacht clubs in Melbourne and Sydney is to have more space available to stand boats on the Hard while owners undertake maintenance and repairs or simply perform the obligatory annual antifouling ritual and anode check.

Here at Yaringa, Members' boats can be slipped at owner convenience at any time, without limits of space or time out of the water. Concreted and gravel bays serviced by power & water at the slipway can cater for over fifty boats to be out of the water at the same time with longer term hardstanding berths available for an additional 150 boats. With Yaringa's state-of-the-art Travel Lift slipping is now easier, quicker, safer and no longer tide-dependent. As well as slipping members' boats Yaringa attracts leisure yachts and cruisers from Westernport, Port Phillip & Corio Bays including the Docklands & Maribyrnong River.

Yaringa is a popular slipping & service centre for boats out of Melbourne & Sydney where restrictions on time, space, what you are allowed to do plus much higher prices make Yaringa an attractive alternative. Yaringa also has a long tradition of slipping commercial fishing vessels from San Remo, Port Albert and Port Welshpool to King Island. Charter & dive boats from Flinders to Sorrento and large Ferries from Bays are regularly slipped at Yaringa.

